

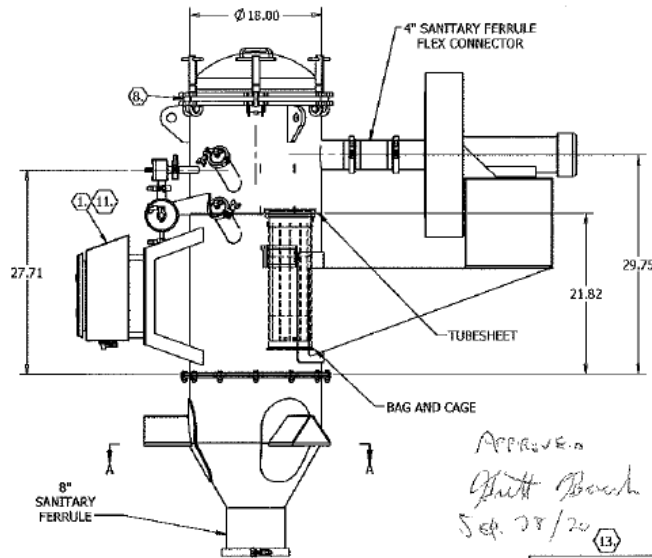
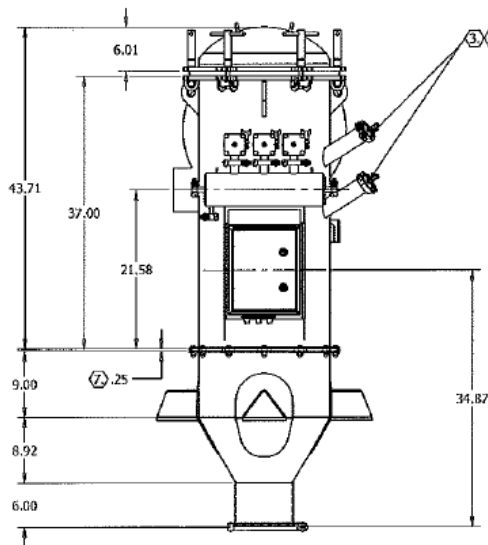
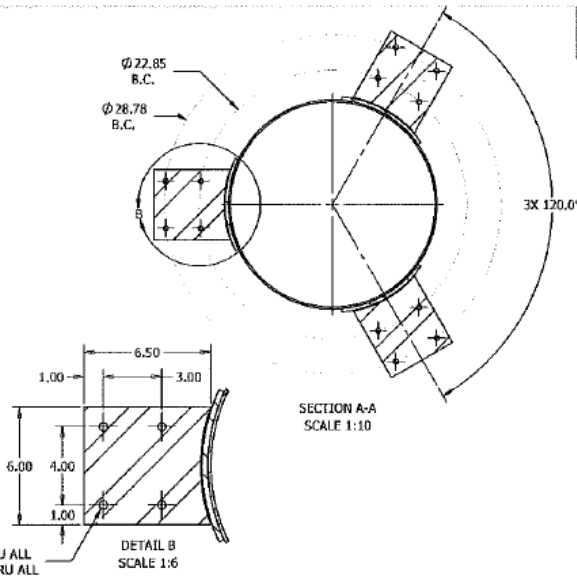
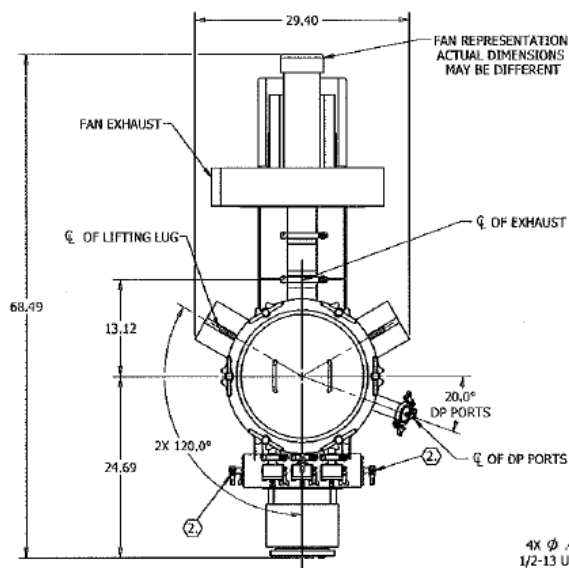
ITEM 2.08**Qty. 1****18HRT3 FILTER****COMPLETE WITH:**

- Filter stressed for 17" Hg vacuum and 250 degree F standard temperature
- 304 Stainless steel construction, all product contact parts
- 304 Stainless steel clean air plenum
- Exterior welds continuous where possible and clean free of weld slag and splatter. Bead blasted exterior
- Product contact welds continuous, free of cracks and crevices to Ra 32 maximum surface finish
- 3/4" Diaphragm valve with 4" diameter compressed gas header
- NCC Timer and Goyen solenoid valves mounted and pre-wired in a NEMA 4X enclosure
- Timer and accessory voltage 24 VDC
- Timer enclosure airlines to diaphragm valves, stainless steel tubing
- 4" OD exhaust, sanitary fitting
- Side mount fan mounting brackets for fan provided by Schenck Process
- Differential pressure Magnehelic Gauge kit, 20 degrees F to 140 degrees F
- Filter housing flange gasketing to be Food Grade white neoprene
- Filter requires 1.4 SCFM of 80-90 PSIG clean dry air, to be supplied by customer
- (3) 6" diameter x 18" long hygienic bags & stainless steel cages
- Sanitary Design: Round housing handles, topside bag replacement, hinged top dome allows clean air access to filter media.
- Transition hopper, 18" OD to 8" OD discharge @ dust line
- 8" OD Dust return line of 304 stainless steel

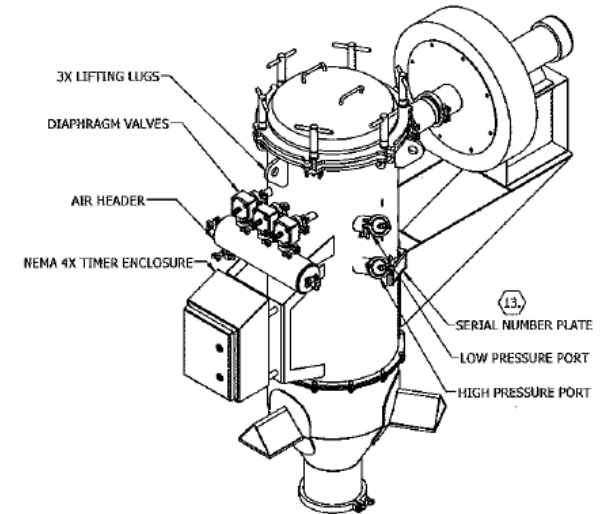








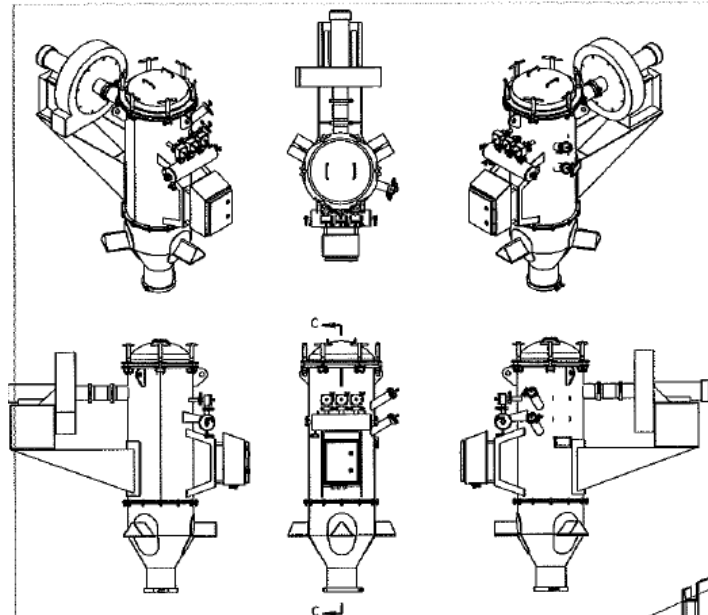
| REVISION | | | | |
|----------|-----|-------------|------|----|
| REV | ECN | DESCRIPTION | DATE | BY |
| A | - | NEW RELEASE | - | - |



GENERAL NOTES:

- NEMA 4X STAINLESS STEEL WATER SHED TIMER ENCLOSURE WITH TIMER CONTROL PANEL REQUIRES 24VDC (4.2W). ENCLOSURE IS DIRECTLY MOUNTED TO A BRACKET ON THE HOUSING AND STAINLESS STEEL AIR LINES ARE PRE-PLUMBED.
- 3/4" SANITARY FERRULE FOR HEADER SUPPLY AIR. 90-100 PSI OF CLEAN, DRY AIR REQUIRED AT 2 SCFM. (CUSTOMER TO SUPPLY)
- (2) 2" SANITARY FERRULE CONNECTIONS MUST BE PLUGGED IF DIFFERENTIAL PRESSURE GAUGE IS NOT USED. FILTER INCLUDES A MAGNETIC DIFFERENTIAL PRESSURE GAUGE AND KIT SHIPPED LOOSE FOR FIELD INSTALLATION (0-30" W.C., 20 F TO 140 F)
- FILTER IS CONSTRUCTED OF 304 STAINLESS STEEL AND RATED FOR 17" HG.
- FILTER INCLUDES (3) 16 OZ PE-16 POLYESTER BAGS AND 304 STAINLESS STEEL CAGES PROVIDING 13 SQ. FT. OF CLOTH.
- 2" SANITARY FERRULE DIFFERENTIAL PRESSURE PORTS TO BE USED IN PLACE OF DEDICATED CLEAN IN PLACE PORT.
- HOUSING FLANGE GASKET MATERIAL: 1/4" THICK WHITE FDA NEOPRENE
- O-RING MATERIAL: 3/4" WHITE 3A SILICONE
- APPROX WT: 469 LBS (MAY CHANGE WITH FAN)
- TOP LID WT IS APPROX. 30 LBS. TOP SECTION TO BE FULLY REMOVED FOR MAINTENANCE
- AIR LINES ARE NOT SHOWN
- SHIPPING NOTES:
- ALL OPENINGS COVERED PRIOR TO SHIPMENT
- STAINLESS STEEL IDENTIFICATION TAG FOR FILTER

| | | | | | |
|---|--|--|------------------------|--|---------------|
| UNLESS OTHERWISE SPECIFIED DIMENSIONS ARE IN INCHES (IN) TOLERANCES | | THIS DRAWING IS THE PROPERTY OF SCHENCK PROCESS LLC AND SHOULD NOT BE REPRODUCED, PHOTOCOPIED OR DISCLOSED TO OTHERS WITHOUT AUTHORIZATION AND SHALL NOT BE USED IN ANY WAY AGAINST OR DETRIMENTAL TO SCHENCK PROCESS LLC. | | PART # W015411.001 | |
| USE WORK INSTRUCTION W3-2-1 | |  | | schenck process Mac Process - Schenck Accurate - Clyde Process | |
| | | 18HRT3 FILTER FOR MAPLE LEAF FOODS | | | |
|  | | SIZE: B | DEPARTMENT: PROD. ENG. | JOB/PROJECT NO. 1100101957 | SIMILAR TO: - |
| SCALE: 1:16 | | DRAWN BY: JMA | DATE: 8/18/2020 | DRAWING NO. C-0255496 | SHEET: 1 OF 2 |



| REVISION | | | | |
|----------|-----|-------------|------|----|
| REV | ECN | DESCRIPTION | DATE | BY |
| - | - | See Sheet 1 | - | - |

PRESSURIZED AIR CONTACT SURFACES

ALL WELDS TO BE CONTINUOUSLY WELDED AND REASONABLY FREE OF IMPERFECTIONS SUCH AS PITTS, FOLDS, CRACKS, CREVICES, SLAG AND SPLATTER.

THESE WELDS NEED NOT BE OF SANITARY CONSTRUCTION. WE WISH TO PURGE WELD THESE AS IF THEY WERE THOUGH, TO MATCH THE AESTHETIC OF THE REST OF THE UNIT.

PASSIVATION REQUIRED ON ALL WELDS.

PRODUCT CONTACT ANGLES

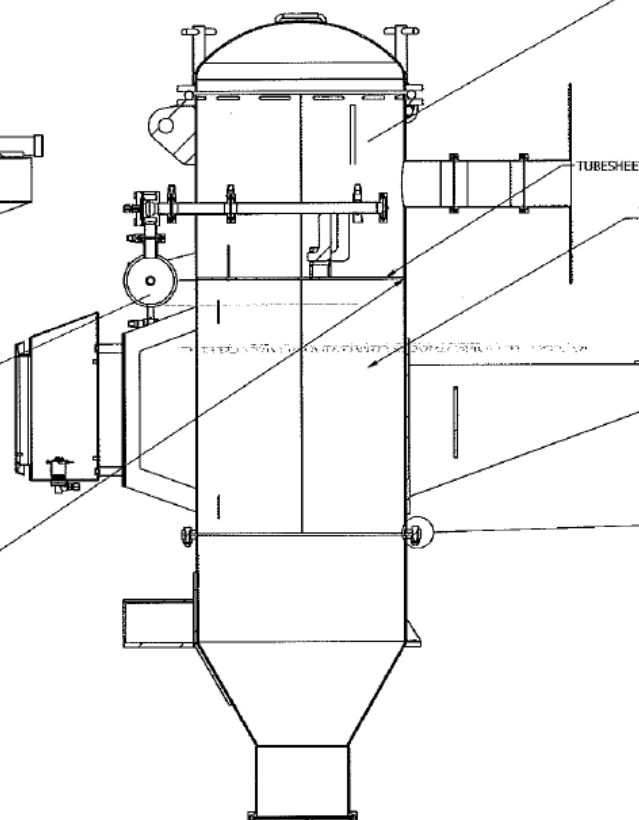
ALL INTERNAL ANGLES OF LESS THAN 135° SHALL HAVE RADII OF NOT LESS THAN 1/8 IN.

① NON-PRODUCT CONTACT/EXTERIOR SURFACES

ALL WELDS TO BE CONTINUOUSLY WELDED AND FREE OF IMPERFECTIONS SUCH AS PITTS, FOLDS, CRACKS, CREVICES, SLAG AND SPLATTER.

WELDS NEED NOT BE GROUND UNLESS NEEDED TO REMOVE SUCH IMPERFECTIONS.

PASSIVATION REQUIRED ON ALL WELDS.



SECTION C-C
SCALE 1:10

EXHAUST AIR CONTACT SURFACES

(INCLUDES THE INSIDE OF THE BLOW TUBES UP UNTIL THE DIAPHRAGM VALVE AND ANY OTHER COMPONENTS INSTALLED IN THIS AREA)

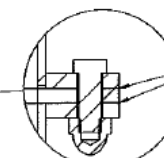
ALL WELDS TO BE CONTINUOUSLY WELDED AND FREE OF IMPERFECTIONS SUCH AS PITTS, FOLDS, CRACKS, CREVICES, SLAG AND SPLATTER.

WELDS NEED NOT BE GROUND UNLESS NEEDED TO REMOVE SUCH IMPERFECTIONS.

② PRODUCT CONTACT SURFACES

(INTERIOR OF UNIT FROM FERRULE TO BOTTOM OF THE TUBESHEET AND ANY OTHER COMPONENTS INSTALLED IN THIS AREA)

ALL SURFACES SHALL HAVE A FINISH AT LEAST AS SMOOTH AS 32 μ IN. RA FINISH AND BE FREE OF IMPERFECTIONS SUCH AS PITTS, FOLDS CREVICES, SLAG AND SPLATTER.



DETAIL C
SCALE 1:2

② (FLANGE GASKET FACES)

FINISHING NOTES:

- ① SHEET OR PLATE OF 2B (COLD ROLLED) STAINLESS STEEL, INSPECTED AND SELECTED TO BE FREE OF PITTS, FOLDS, AND CREVICES, AND WHICH ARE MEASURED TO HAVE A MAXIMUM RA OF 32 μ IN. ARE ACCEPTABLE.
- ② SEALING SURFACES ADJACENT TO PRODUCT CONTACT SURFACES ARE TO BE CONSIDERED PRODUCT CONTACT.

FINISH REQUIREMENTS

| | | | | |
|-------------|------------------------|----------------------------|-----------------------|---------------|
| SIZE: B | DEPARTMENT: PROD. ENG. | JOB/PROJECT NO. 1100101957 | SIMILAR TO: - | REV: A |
| SCALE: 1:32 | DRAWN BY: JMA | DATE: 8/18/2020 | DRAWING NO. C-0255496 | SHEET: 2 OF 2 |

Approved
Burt Bassel
SEC. 28/20